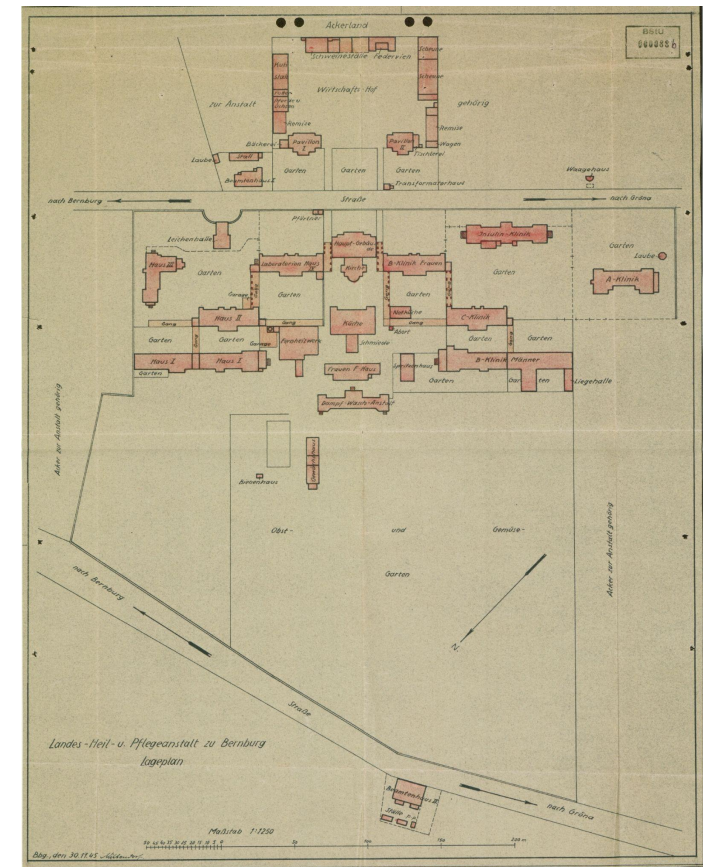


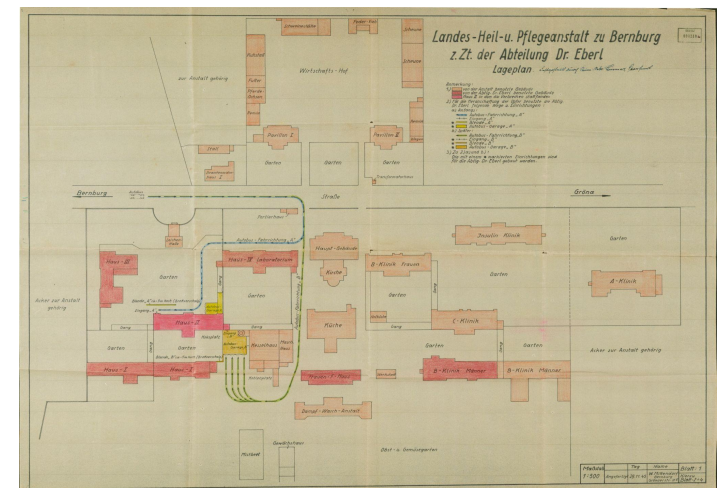
Bernburg Plans 3D User Guide

Introduction

A set of plans was drawn up in November 1945. They show the grounds of the psychiatric hospital, the area used for killing people from November 1940 and floor plans of the building in which the killings took place. As things stand at present, it is not known on which witness statements these plans are based. Nevertheless, the plans illustrate many details that can be found in statements made by staff from the 1950s and 1960s about the killing center. These include, for example, the transport routes of the buses: in the early days of the killings, the transport buses stopped in front of the building. However, when the arrival of the patients was observed by bystanders, a garage for several transport buses was built behind the building. The buses were able to enter this garage completely and only when the doors were closed were the occupants allowed to get out and enter the building where the killings took place.



[Site plan of the psychiatric hospital](#)



[Site plan of the Killing Centre](#)

Introduction continued...

But there are also discrepancies: For example, the floor plan records mobile stretchers for transporting the bodies for cremation, while the statements indicate that the staff dragged dead bodies by hand along a tiled transport route. The technical system used to inject and extract the carbon monoxide in the gas chamber is also recorded. No details of this technical system can be found either in the statements or in photographs from 1945.

Viewing the Plans:

PDF versions of each plan in German with an English translation on the second page can be found using the links below:

[1 - Bernburg Site map_de&en](#)

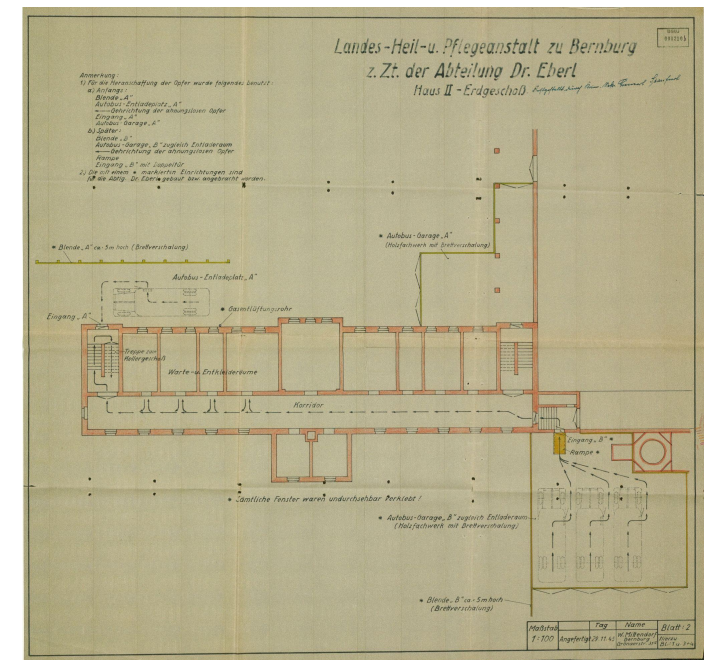
[2 - Bernburg detailed Site plan_de&en](#)

[3 - Bernburg first floor plan_de&en](#)

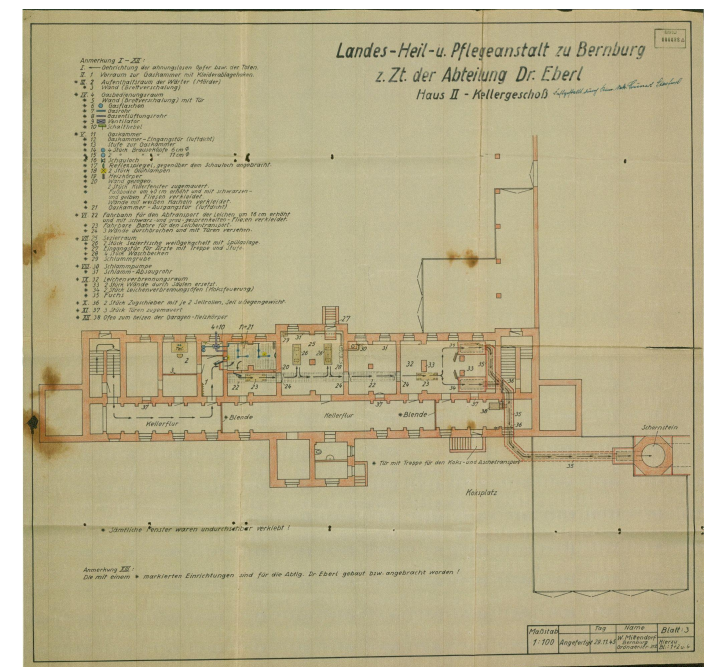
[4 - Bernburg cellar floor plan_de&en *](#)

*This plan can be used in conjunction with:

[The Virtual tour of Bernburg Euthanasia Center and exhibition space.](#)



[Building II Ground Floor plan](#)



[Building II Cellar Plan](#)

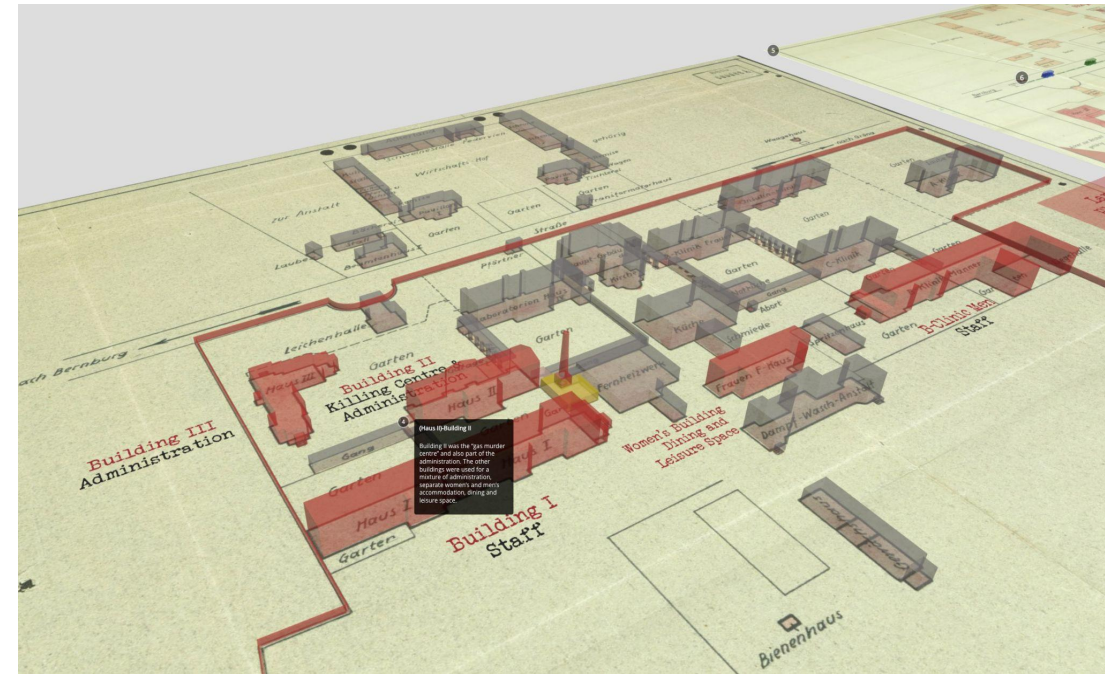
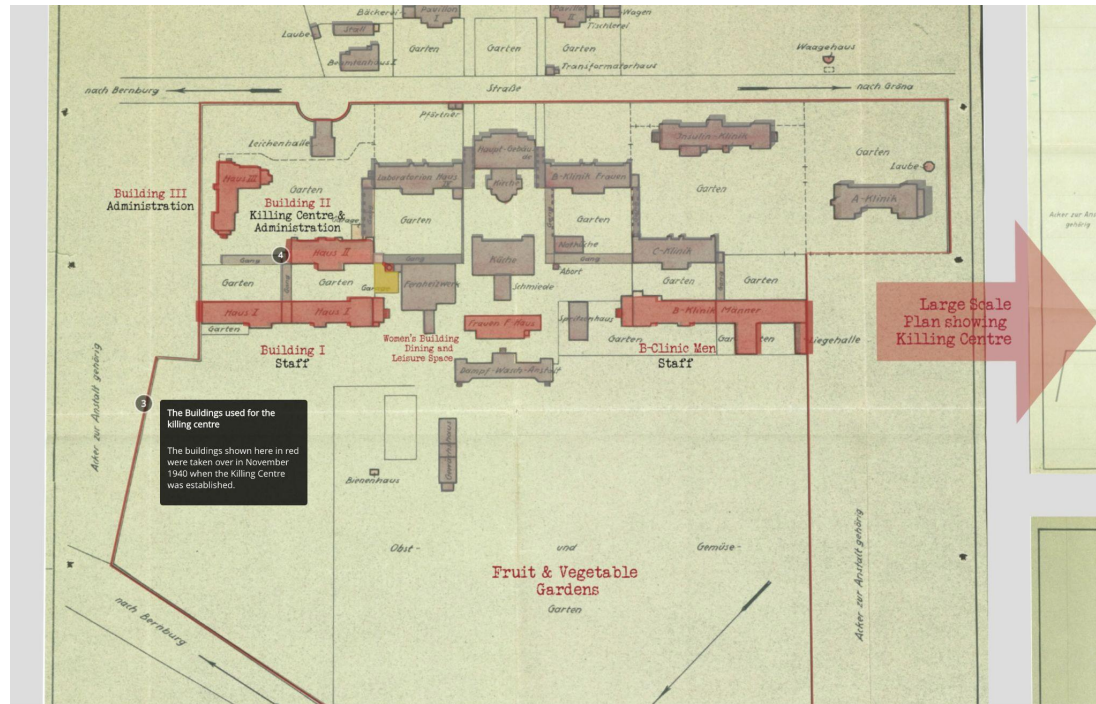
Workshop Activity:

The following sequence of annotated 'Scenes' from the model reveals how the plans drawn in 1945 show how the victims arrived and entered the Bernburg Euthanasia Center and how this changed over time. This is explained using 3 of the 4 plan drawings. Bernburg Plans 3D is an explorable online annotated 3D model. Click [Here](#) to explore these historic plans which have been enhanced with 3D elements and selected english translations.

Users are invited to explore the Model and then use the following Scenes and Annotation texts from *Bernburg Plans 3D* for workshop activity: [4.4 Interactive work with 3D Models](#). Users may also generate additional scenes (using a screen shot method) by freely navigating the online 3D model. These could be used for telling a more detailed story taking into account further study of all materials provided.

All annotated scenes from *Bernburg Plans 3D* can be accessed and downloaded: [1](#), [2](#), [3](#), [4](#), [5](#), [6](#), [7](#), [8](#), [9](#), [10](#), [11](#), [12](#), [13](#), [14](#), [15](#).

Bernburg Plans 3D Annotated Scenes



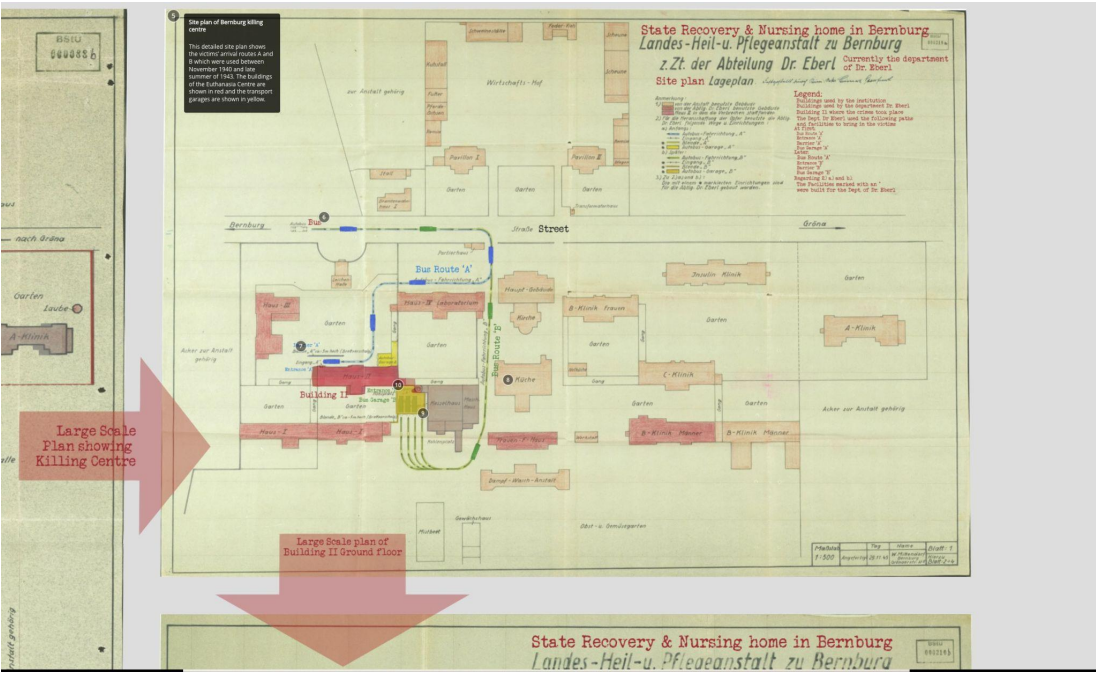
3 The Buildings used for the killing center

The buildings shown here in red were taken over in November 1940 when the Killing Center was established.

4 (Haus II)-Building II

Building II was the “gas murder center” and also part of the administration. The other buildings were used for a mixture of administration, separate women’s and men’s accommodation, dining and leisure space.

Bernburg Plans 3D Annotated Scenes



5 Site plan of Bernburg killing center

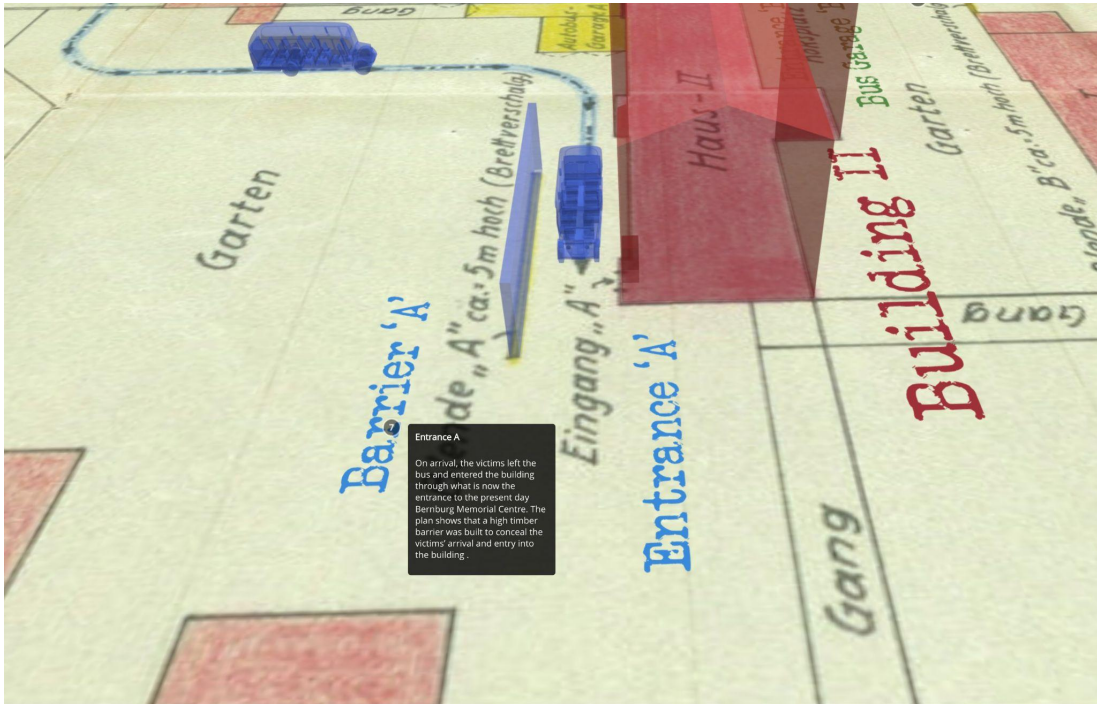
This detailed site plan shows the victims' arrival routes A and B which were used between november 1940 and late summer of 1943. The buildings of the Euthanasia Center are shown in red and the transport garages are shown in yellow.



6 Victim Transport arrival route 'A'

At first, the buses, shown here in blue, followed this route directly to Entrance 'A' where victims entered the building.

Bernburg Plans 3D Annotated Scenes



7 Entrance 'A'

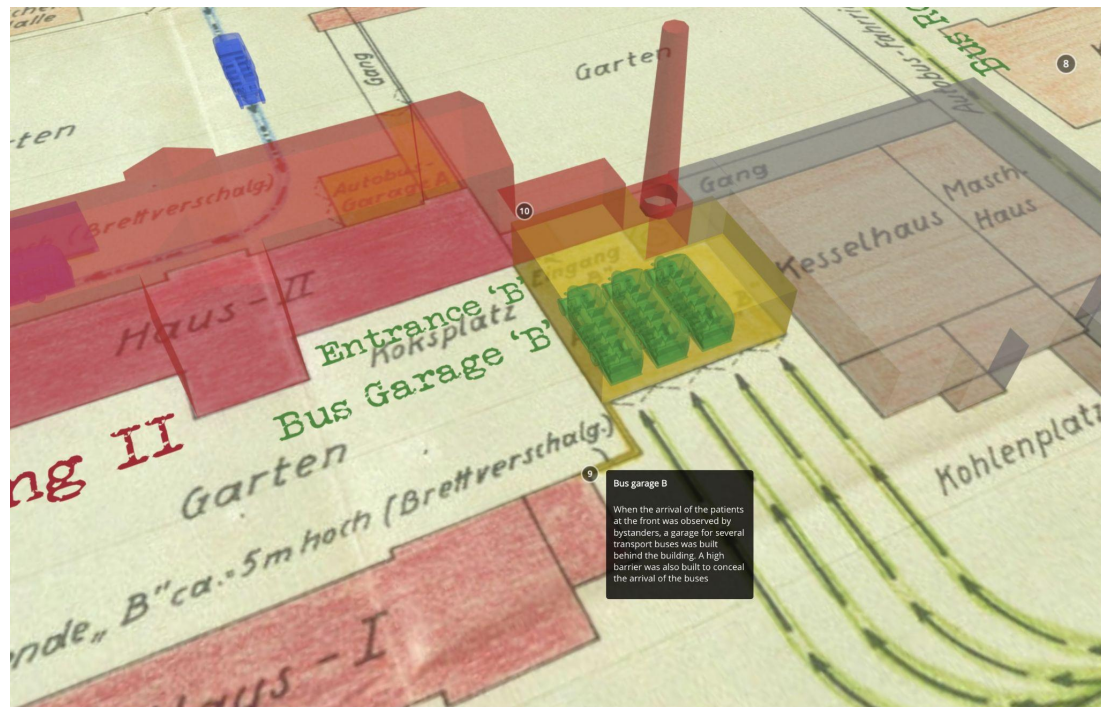
On arrival, the victims left the bus and entered the building through what is now the entrance to the present day Bernburg Memorial Center. The plan shows that a high timber barrier was built to conceal the victims' arrival and entry into the building.



8 Bus route 'B'

In the second phase of victim transports, the arrival route changed to using route 'B', shown in green, in which the buses arrived instead at the back of the building II where victims then entered the building completely unseen.

Bernburg Plans 3D



9 Bus garage 'B'

When the arrival of the patients at the front was observed by bystanders, a garage for several transport buses was built behind the building. A high barrier was also built to conceal the arrival of the buses.



Bus Garage before 1960

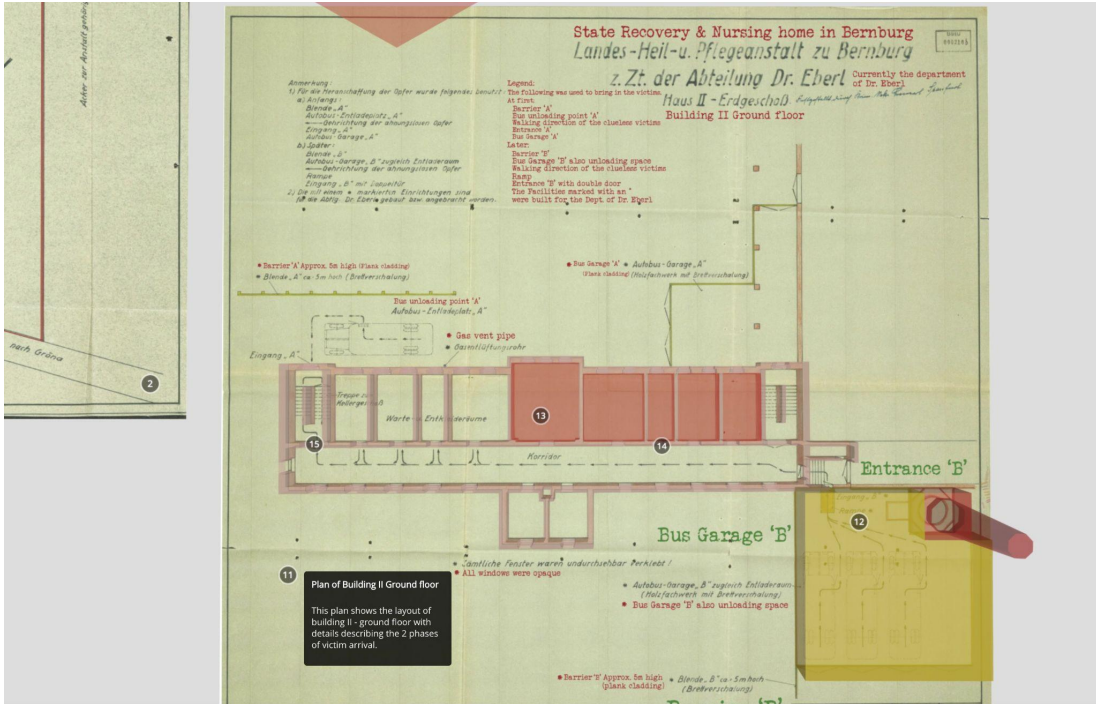
This photo shows the timber-clad bus garage which was demolished sometime before 1960. The Crematorium Chimney and Building II can also be seen.

Bernburg Plans 3D Annotated Scenes



10 Entrance 'B'

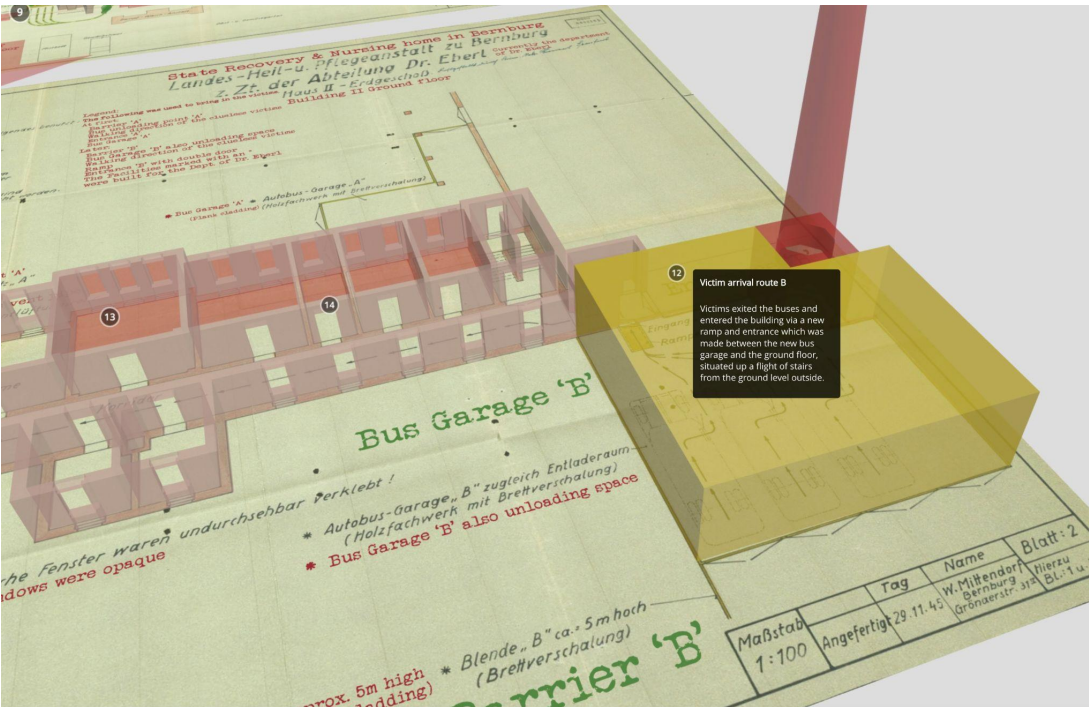
The buses were able to enter this garage completely and only when the doors were closed were the occupants allowed to get out and enter the building where the killings took place.



11 Plan of Building II Ground floor

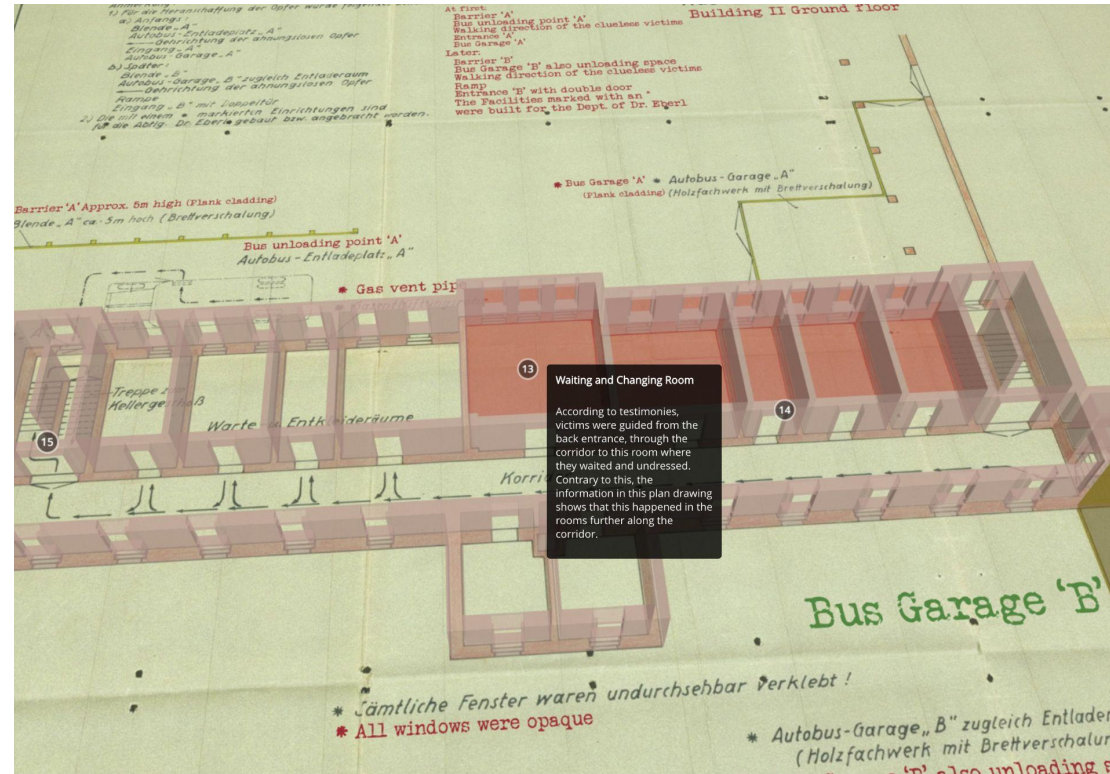
This plan shows the layout of building II - ground floor with details describing the 2 phases of victim arrival.

Bernburg Plans 3D Annotated Scenes



12 Victim arrival route 'B'

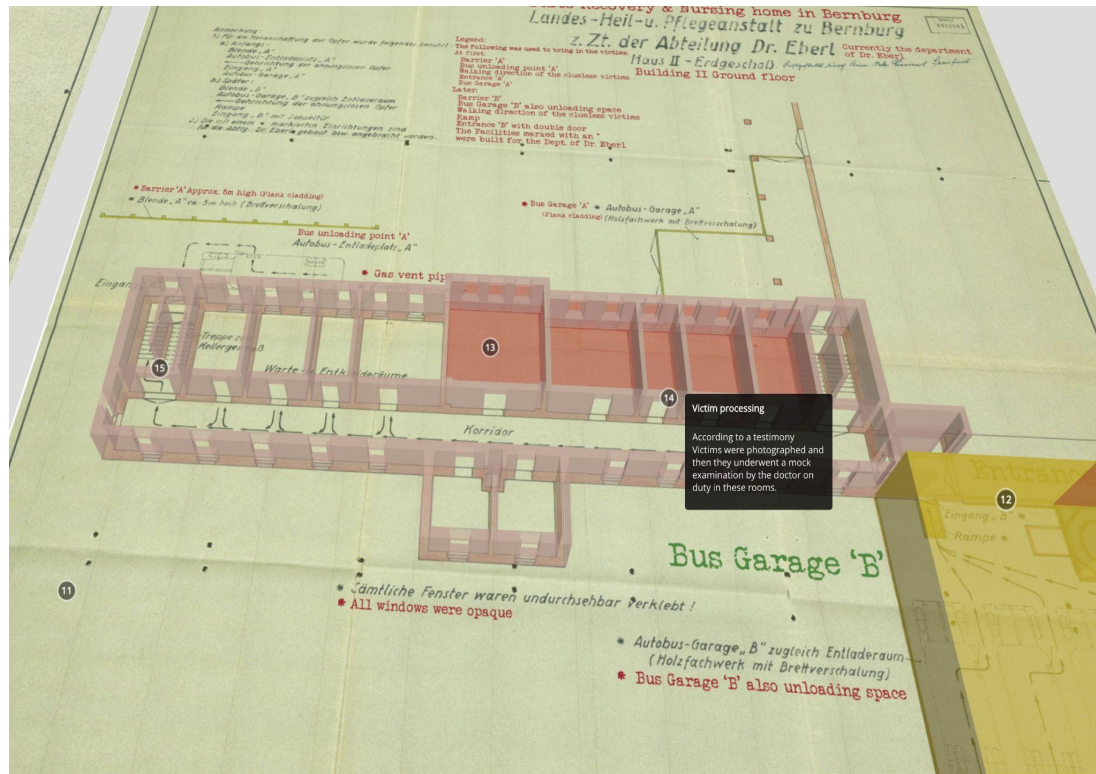
Victims exited the buses and entered the building via a new ramp and entrance which was made between the new bus garage and the ground floor, situated up a flight of stairs from the ground level outside.



13 Waiting and changing room

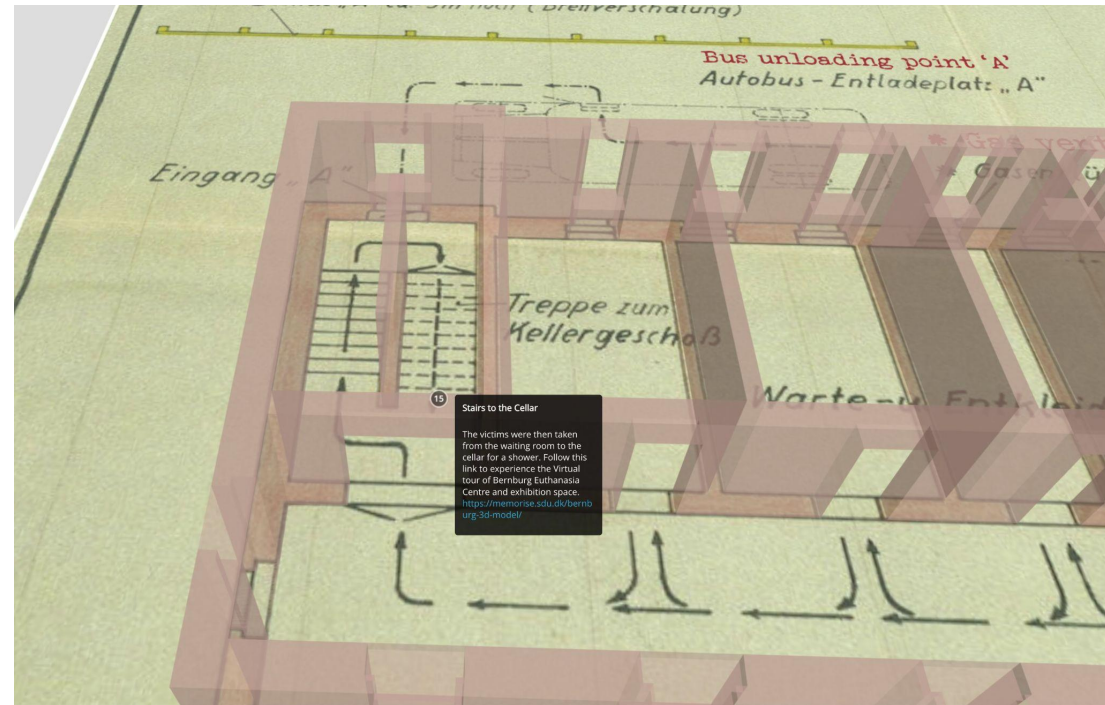
According to testimonies, victims were guided from the back entrance, through the corridor to this room where they waited and undressed. Contrary to this, the information in this plan drawing shows that this happened in the rooms further along the corridor.

Bernburg Plans 3D Annotated Scenes



14 Victim Processing

In these rooms, according to testimonies, victims underwent a mock examination by the doctor on duty after which they were photographed.



15 Stairs to the cellar

The victims were led from the waiting room to the cellar, where they were allegedly supposed to take a shower. Follow this link to experience the Virtual tour of Bernburg Euthanasia Center and Exhibition space.

<https://memorise.sdu.dk/bernburg-3d-model/>